

# *User Guide*



## Foreword

Thanks for using our MP3 digital player!

Before using the MP3 player, please read the user guide carefully so as to use the player better.

If damage is caused by personal mishandle of the software or hardware, or by personal product repairing and other accidental matters, we will not be responsible for any loss that resulted from above reasons.

Please backup your data onto your personal computer in case of any unpredictable things.

## Function features

1. The player supports MP3 and WMA music file formats.
2. The player has repeat functions, including A-B repeat function.
3. The player can power off automatically after a preset time.

## Accessories

**Note:** The following icons are only a guide and may differ slightly from actual product appearance.

1. USB Cable



2. AAA Battery



3. Earphones

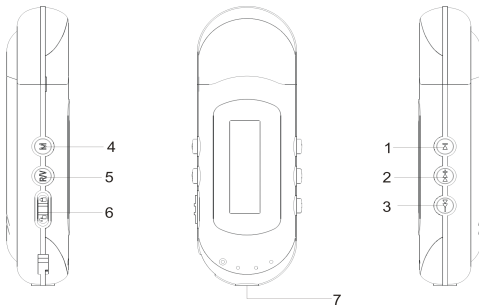


4. *User Guide*



## Components and button functions

**Note:** The following picture is only a guide and may differ from the actual product appearance.



- |                                                                    |                                     |
|--------------------------------------------------------------------|-------------------------------------|
| 1. <b>【▶ 】</b> : Play/Pause/Confirm button.                        | 2. <b>【▶▶】</b> : Forward            |
| 3. <b>【◀◀】</b> : Backward                                          | 4. <b>【M】</b> : Menu/confirm button |
| 5. <b>【R/V】</b> : Volume button                                    |                                     |
| 6. <b>【HOLD ▶】</b> : Lock/Unlock button (write protection) switch. |                                     |
| 7. Earphone jack                                                   |                                     |

### Turn power on and play music

To Start:

1. Install an AAA battery to the battery slot.
2. Connect earphone to earphone jack.
3. Switch **【HOLD】** button to “unlock” position.
4. Press and hold **【▶|】** button to enter into “MSC” mode.(The default is “Music” mode.)
5. Short press **【▶|】** button to play music.

A-B repeat:

1. In music playback mode, short press **【M】** button to select “A” point, short press **【M】** button again to start “A-B” repeat.
2. Short press **【M】** button for the third time to cancel “A-B” repeat.

To return main menu: Press and hold **【M】** button.

To Pause/play: Short press **【▶|】** button.

To change tracks: Short press **【▶+】** / **【-◀】** button .

To turn unit off: Press and hold **【▶|】** button.

Press and hold **【M】** button to return to main menu, then press **【▶+】** / **【-◀】** button to select: Play Music, Setting, Info, Exit.

### Volume adjustment:

In video playback, short press **R/V** button to pitch on the volume rim, at this time press **-◀/▶+** button to turn down or turn up volume.

## **Setting:**

### *Equalizer:*

1. Select Equalizer mode and short press **【M】** button to enter.
2. Short press **【▶+】** / **【-◀】** button to select your desired option (e.g. Normal, Pop, Rock, Classical, Jazz, Bass, Exit)
3. Short press **【M】** button to confirm.

### *Repeat Mode:*

1. Select repeat mode and short press **【M】** button to enter.
2. Short press **【▶+】** / **【-◀】** button to select your desired option(e.g. Normal, Repeat one, Repeat all, Random repeat)
3. Short press **【M】** button to confirm.

### *Contrast:*

Select Contrast mode and short press **【M】** button to enter, then press **【▶+】** / **【-◀】** button to adjust the contrast, at last press **【M】** button to save your setup.

### *Backlight:*

Select Backlight mode and short press **【M】** button to enter, then press **【▶+】** / **【-◀】** button to select the backlight time: Always off/5S/10S/Always on.

### *Power Set:*

Select Power Set mode and short press **【M】** button to enter, then press **【▶+】** / **【-◀】** button to select the auto off time: 2MIN/10MIN/30MIN

### *Language:*

1. Select language mode and short press **【M】** button to confirm.
2. Short press **【▶+】** / **【-◀】** to select your desired option (e.g. English, French, Chinese (Trad) Chinese(Simp), German, Spanish, Italian, Portuguese, Farsi, Russian, Greek, Korean, Japanese)

3. Short press **【M】** button to confirm.

**Info:**

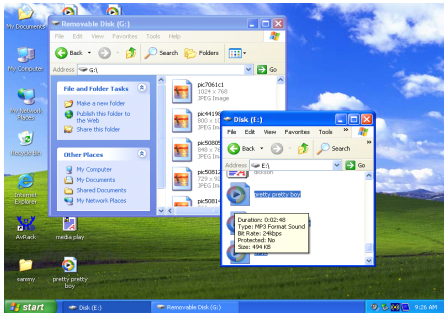
In the main menu, select **Info.** menu and enter by pressing **【M】** button, then you can see some system information, like free flash capacity and total flash capacity.

## Adding/Removing Mp3 files/folders

You can use the player as a removable USB storage.


1. Connect the PC USB port and the MP3 USB port with the provided USB cable.
2. Add MP3 files/folders to the USB storage's folder.
  - I . Open files/folders to transfer from your computer.
  - II . Open My Computer → Removable Disk from the desktop.
  - III. Select the files/folders to transfer from your computer and draw and put them to a folder of your choice in the Removable Disk (you also can transfer files on your PC to the player using the "Copy" and "Paste" functions).





3. Delete MP3 files from the removable USB storage (use the "Delete" command).

## Remove the player from PC Please follow the steps in case of damaging the player or data loss

1. Click the left mouse button on the  icon that is on the taskbar at the bottom right corner of the desktop.
2. Click the "Safely remove USB Mass Storage Device – Drive (X:)" column.
3. Disconnect the player from your computer.

### **CAUTION:**

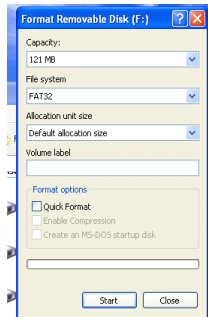
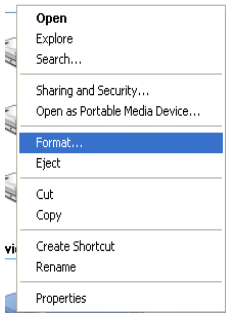
- ❖ Do not remove the player while files within the USB Mass Storage are being played on your computer.
- ❖ Do not disconnect the player from your computer while transferring file, or it will cause damage to the player or data loss.

### **Menu Navigation**

- **【M】** button: Enter function, enter main menu or submenu.
- Skip button ( **【▶▶】** / **【◀◀】** ): Shift menus.
- Play/Pause button ( **【▶⏸】** ): Play, Pause, or confirm.

### **Format MP3 player**

The MP3 player format is "FAT" format. To format the MP3 player, you need to right click the "Removable Disk" and choose "Format" mode, then click "Start" to format in operating system. As following pictures show:



## Notice

- Please put “ **【HOLD ▶】** ” switch “Unlock” position before using the player.
- EQ is not obvious while playing WMA format music files.
- Do not use the earphones while driving an automobile or riding a bicycle.
- It may cause an accident if you turn the volume up while walking down the street, especially crossing at intersections.
- Do not turn up the volume too high, doctors warn against prolonged exposure to high volume.
- Stop using the device or turn the volume down if you have ringing in your ears.
- Our packages use cardboard, polyethylene, and do not use any unnecessary materials
- **The user guide is only for reference.**
- Under the influence of electrostatic phenomenon, the product may malfunction and require user to power reset.

## Technical Specification

No.	Name	Description
1	Capacity of Flash Memory	128MB/256MB/512MB/1GB/2GB/4GB/8GB
2	USB Interface	USB2.0(High speed), Type A
3	LCD Display	128×32 graphic LCD with LED Backlight
4	Power supply	One 1.5V(AAA/LR03) battery
5	S/N ratio	>85dB
6	Audio Frequency Range	20Hz – 20kHz
7	EQ	Normal, Pop, Rock, Classic, Jazz, Bass
8	Decoding Format	MP3 and WMA
9	File System	FAT16, FAT32
11	Operating Moisture	10%—75%

**VER: 3.0**

**736-MD218I302**

